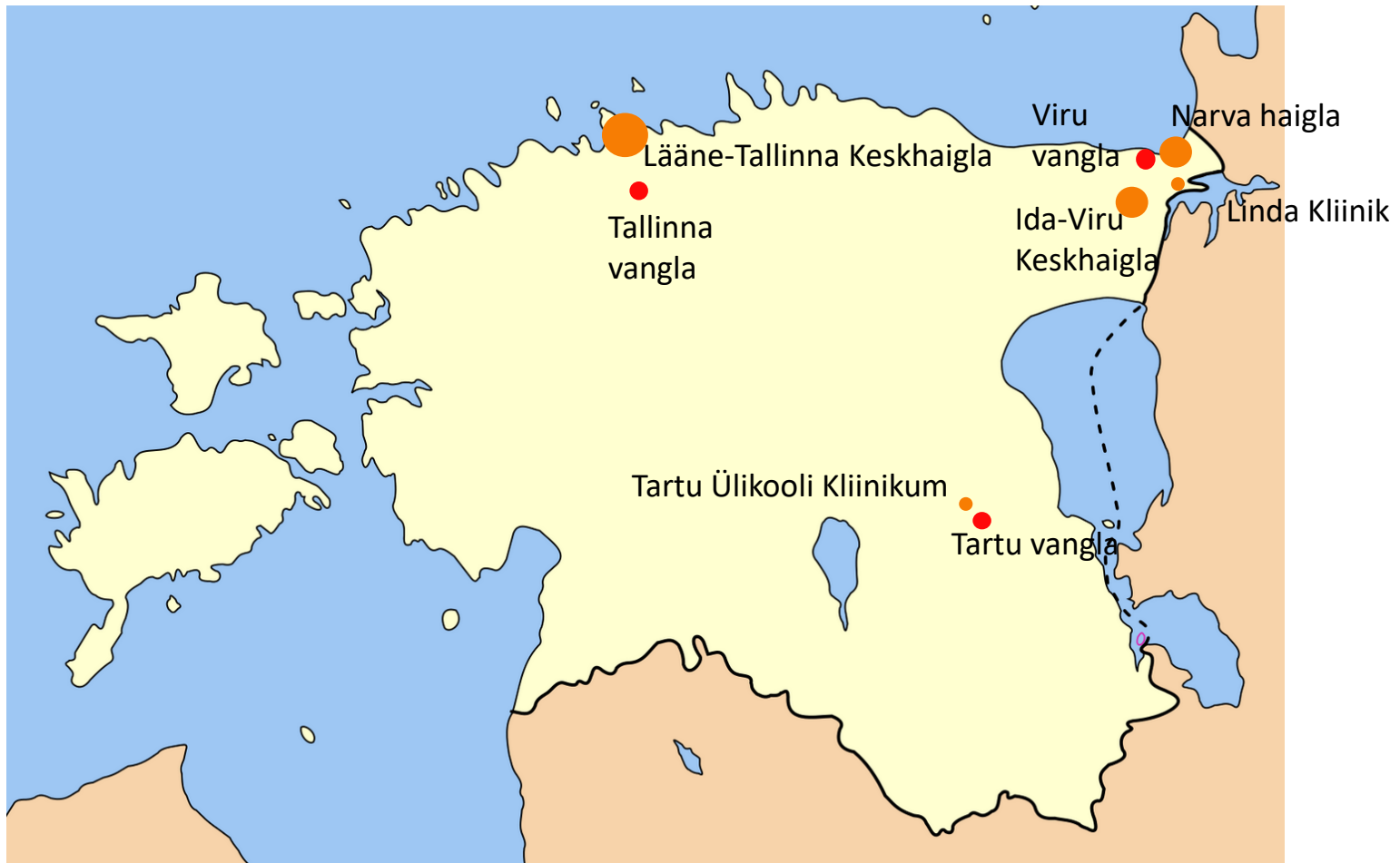


# Andmekogu seisuga 31.12.2016

- Sisestatud 4767 patsienti , kumulatiivselt surnud 551
- Tbc diagnoositud 162-l E-HIV patsiendil
- AIDS diagnoositud E-HIV patsientidest 155 juhul
- Kvaliteedikontrolli on läbinud 13 % patsientide andmed

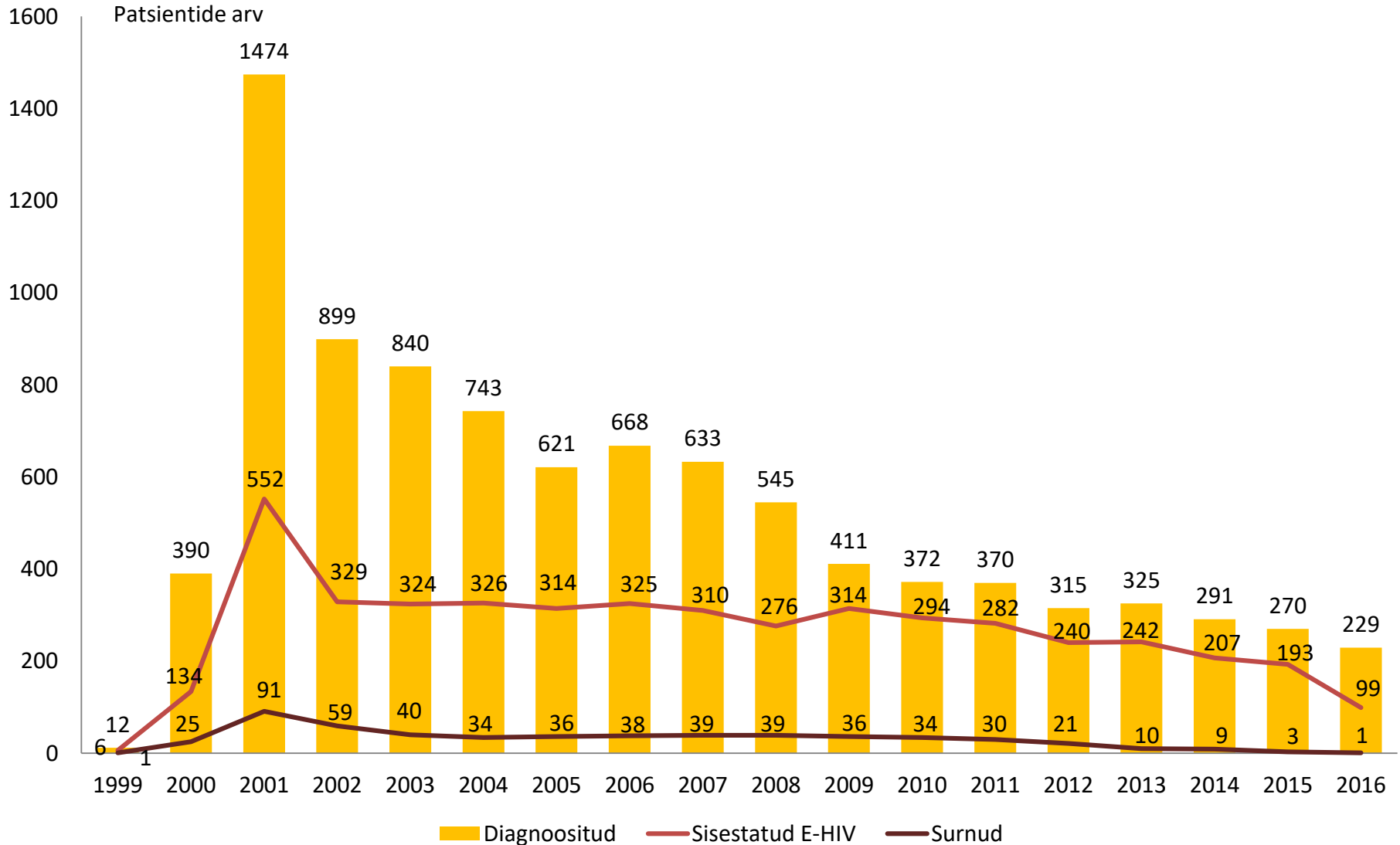


# Andmeid sisestavad asutused (haiglad ja vanglad)



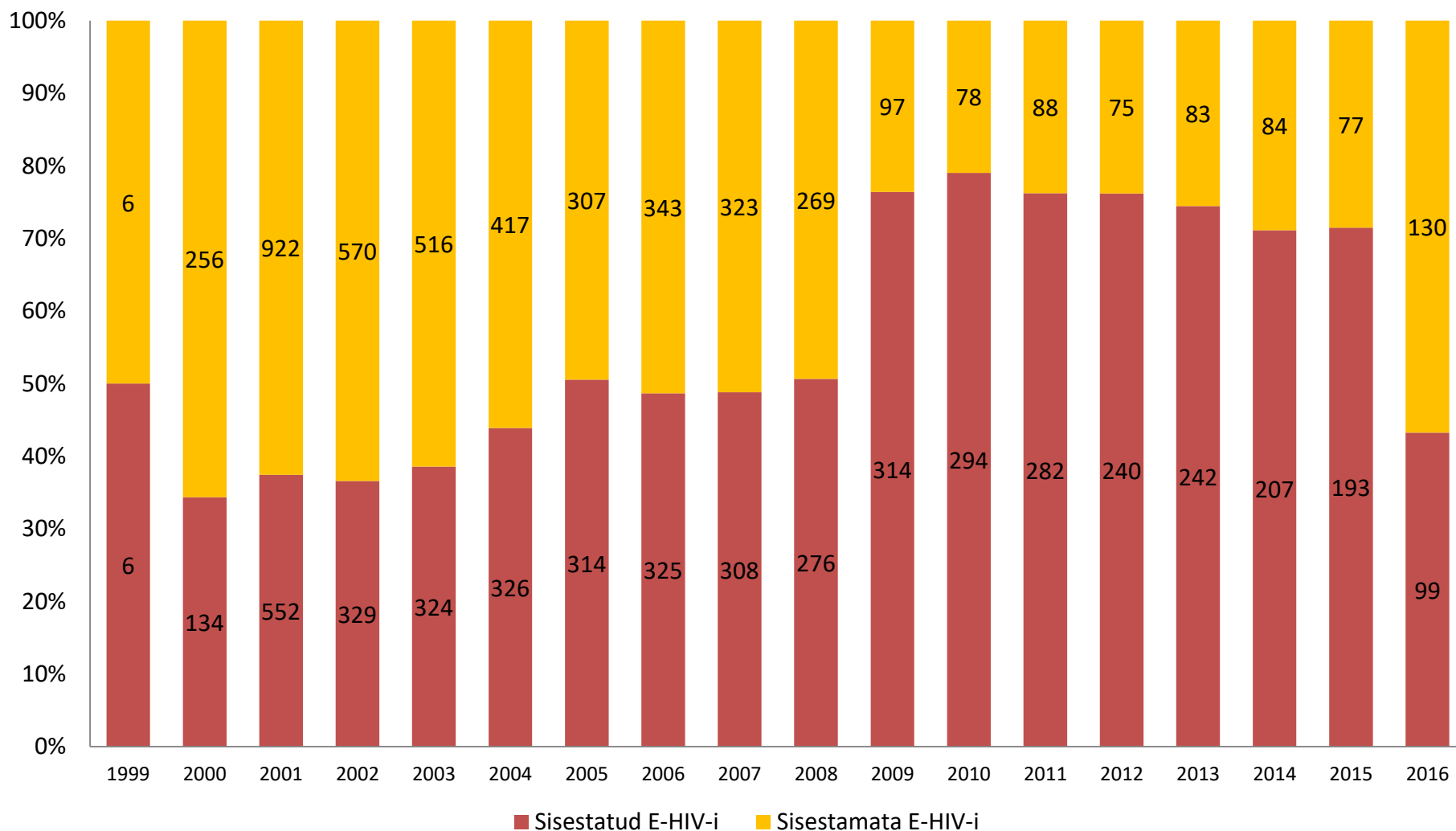


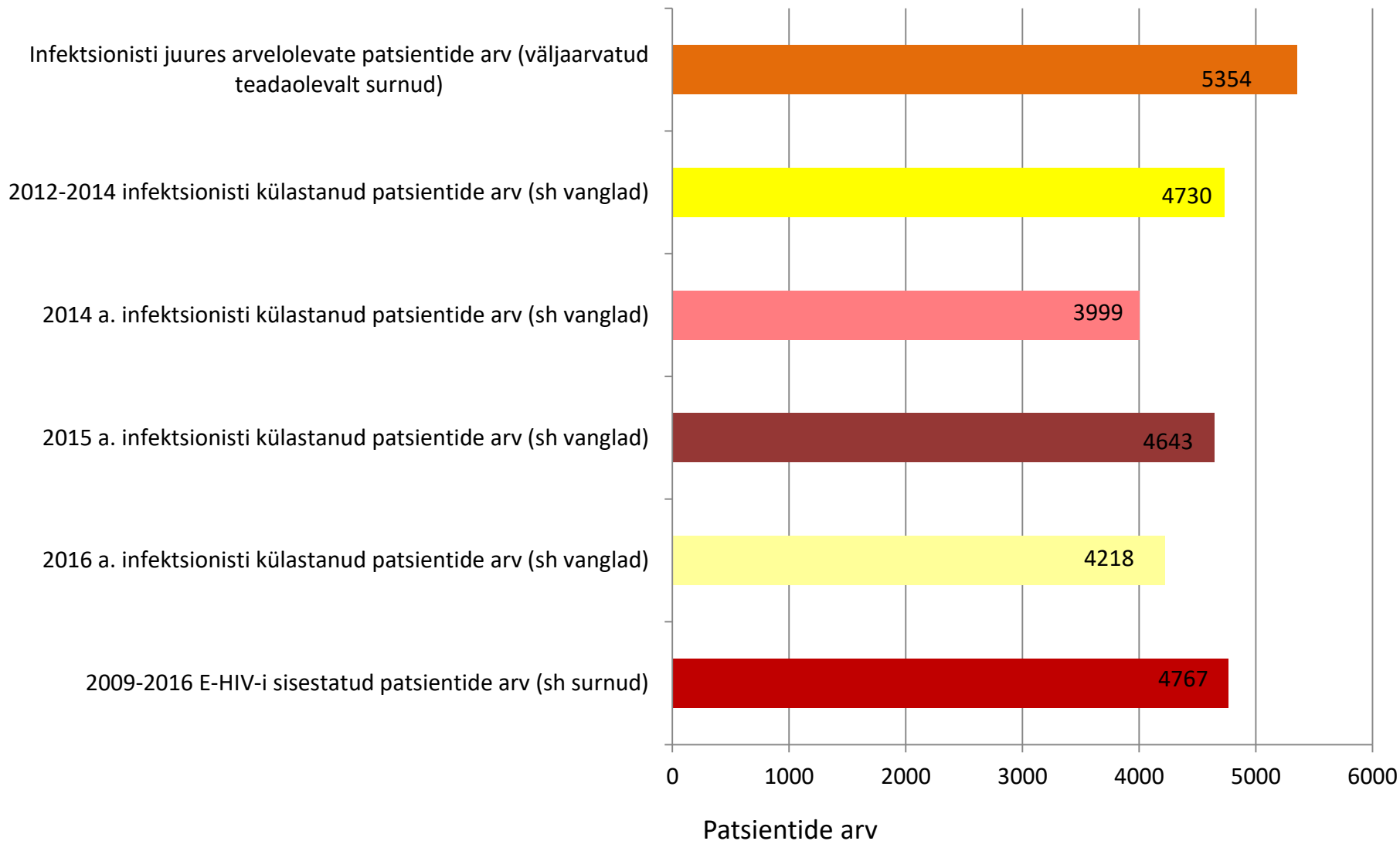
# Uued HIV diagnoosid vs andmebaasi sisestatud





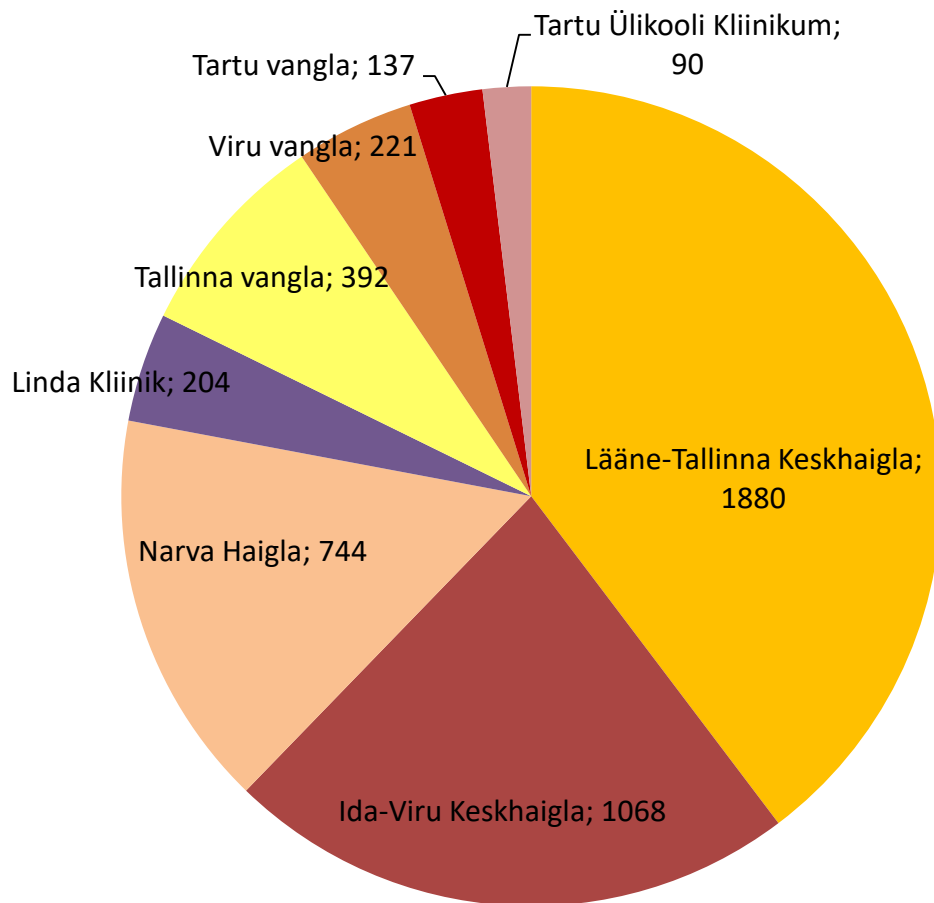
# Sisestatud patsientide osakaal diagnoositest







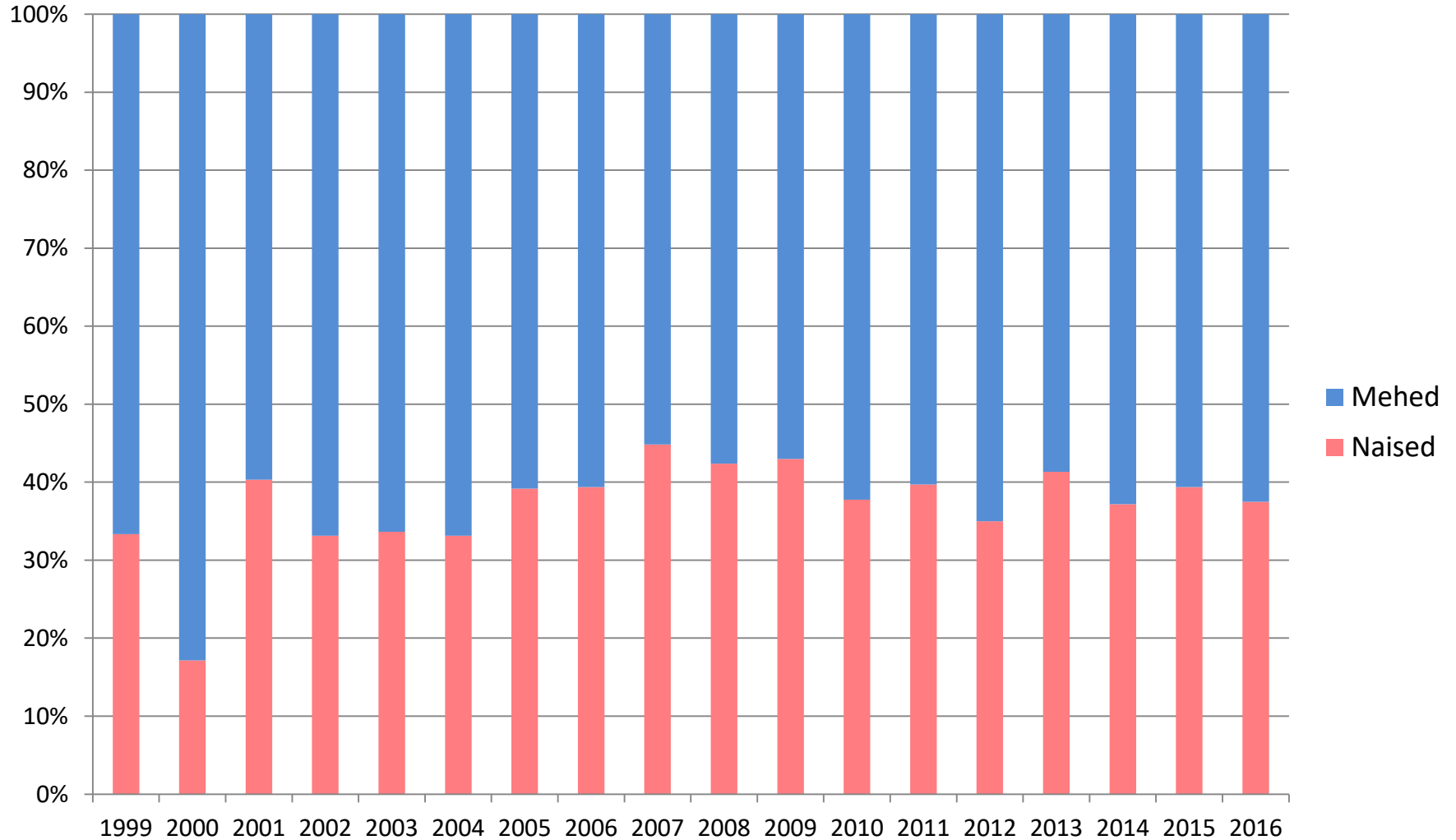
# Sisestatud patsientide jaotus meditsiini-asutuste järgi



Tallinn, Harjumaa 1880  
Ida-Virumaa 2016  
Tartu, Lõuna-Eesti 90  
Vanglad 781 (sh Murru vangla)



# Sooline jaotuvus diagnoosimisel

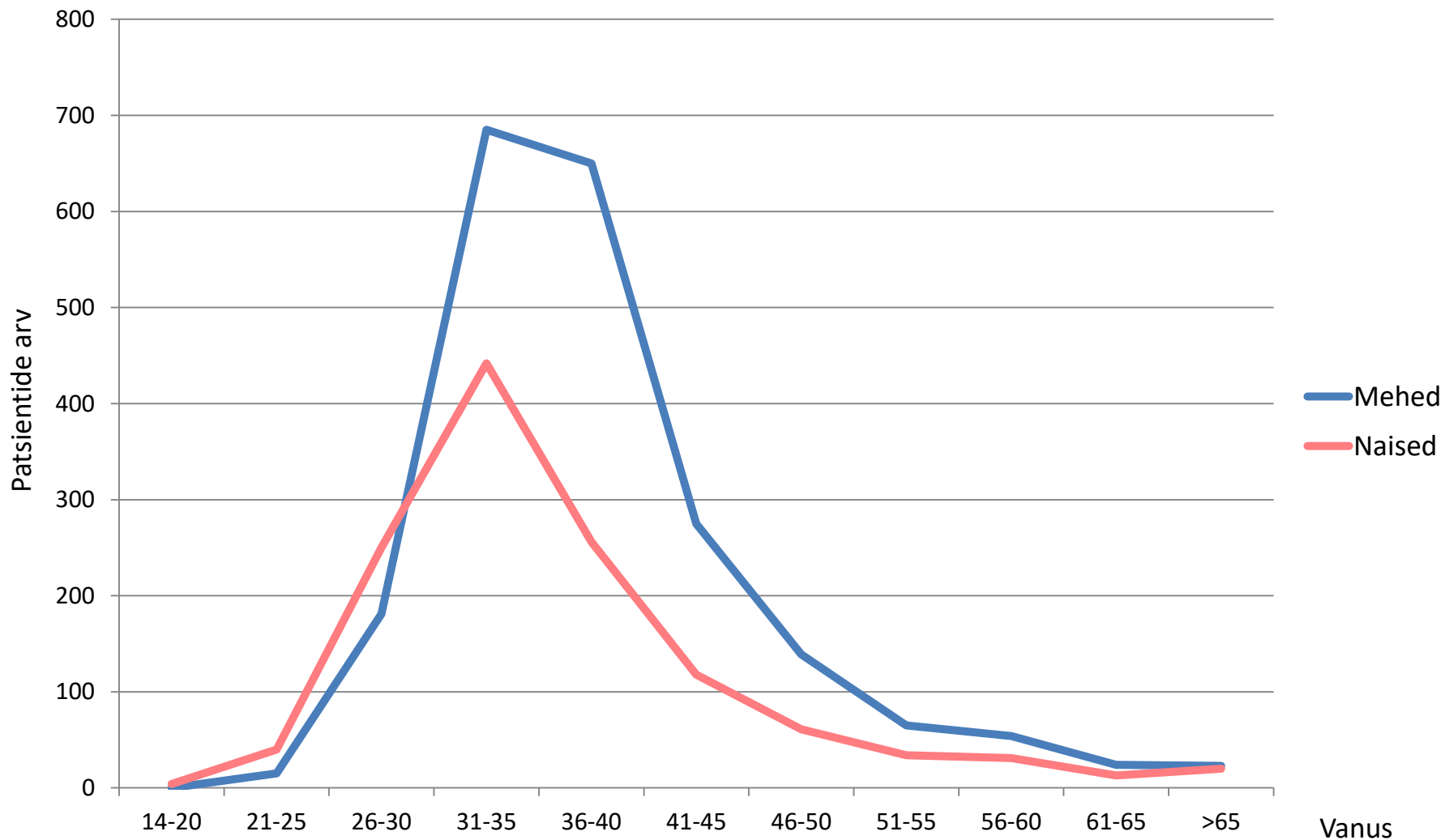


Diagnoosimisaasta



# Vanusegrupid

## andmekogus seisuga 31.12.2016

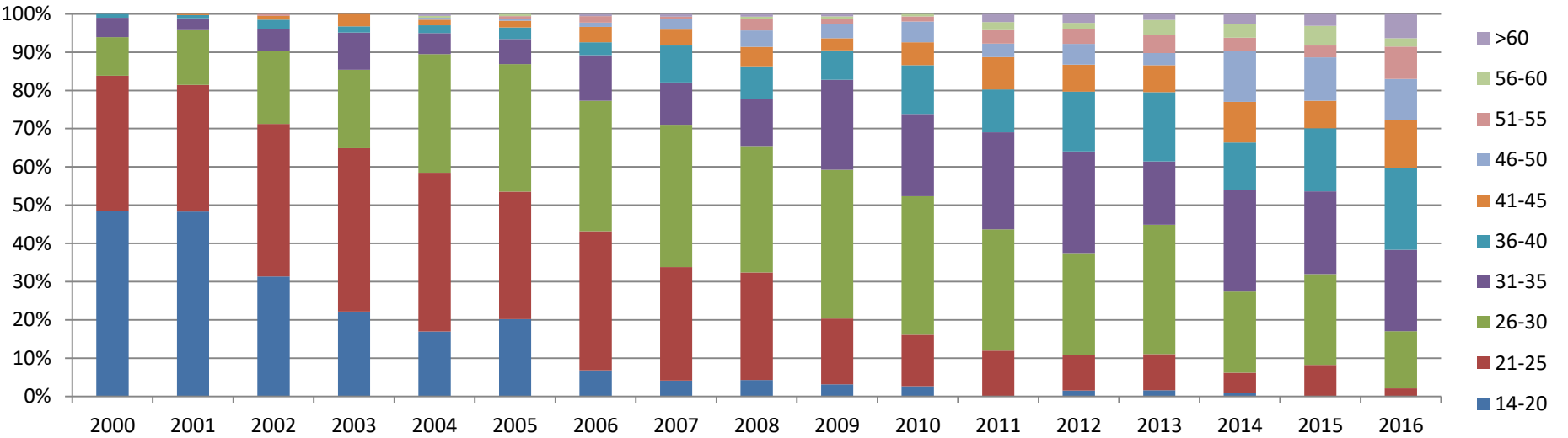




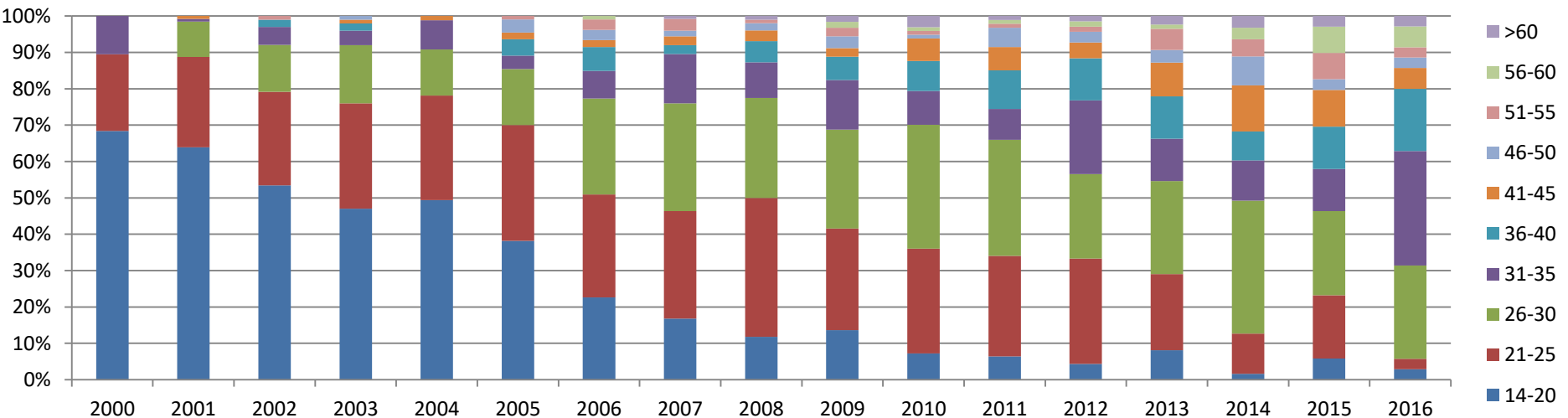


# Vanused diagnoosimisel diagnoosimisaastate alusel

Mehed

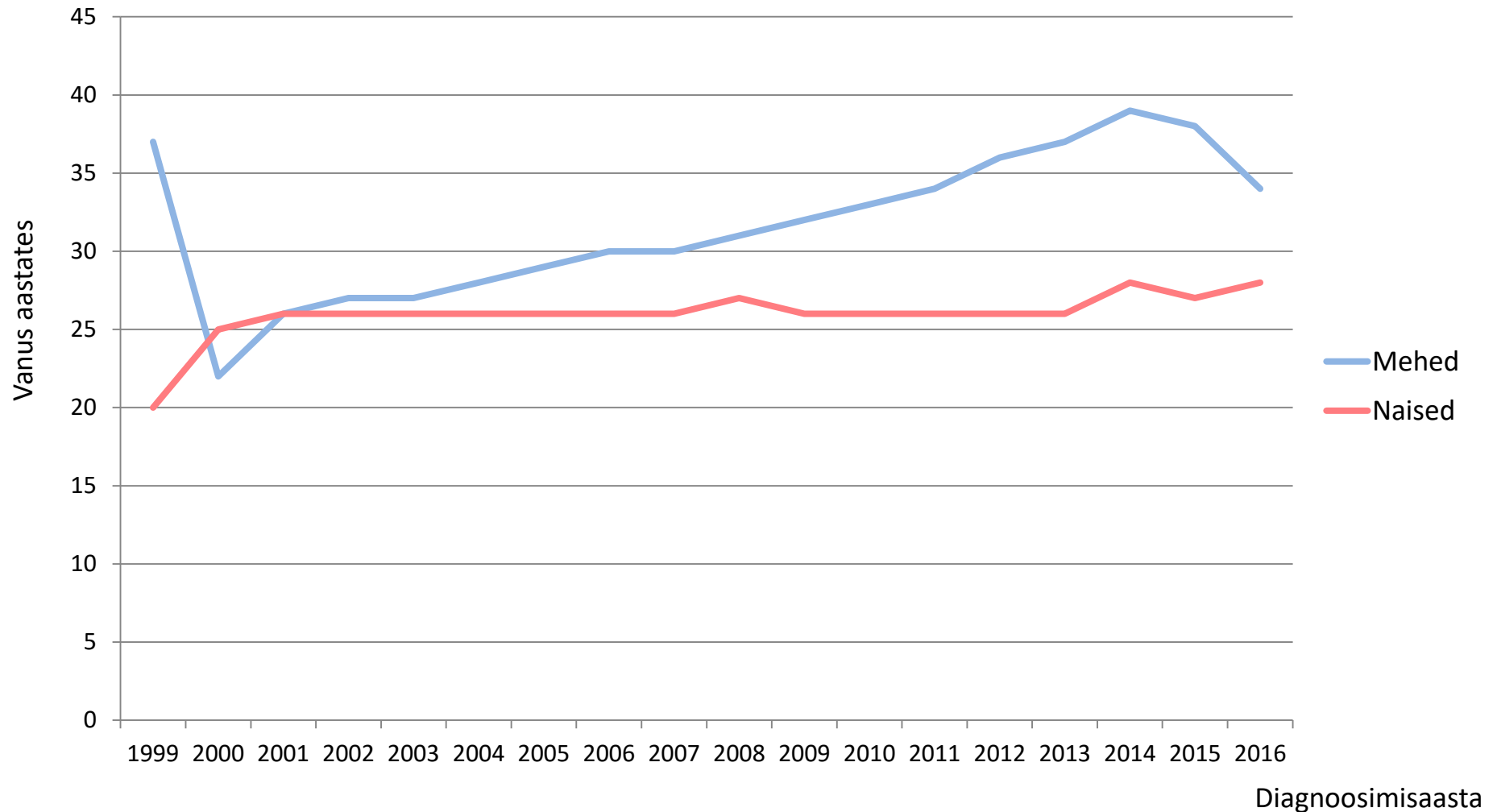


Naised



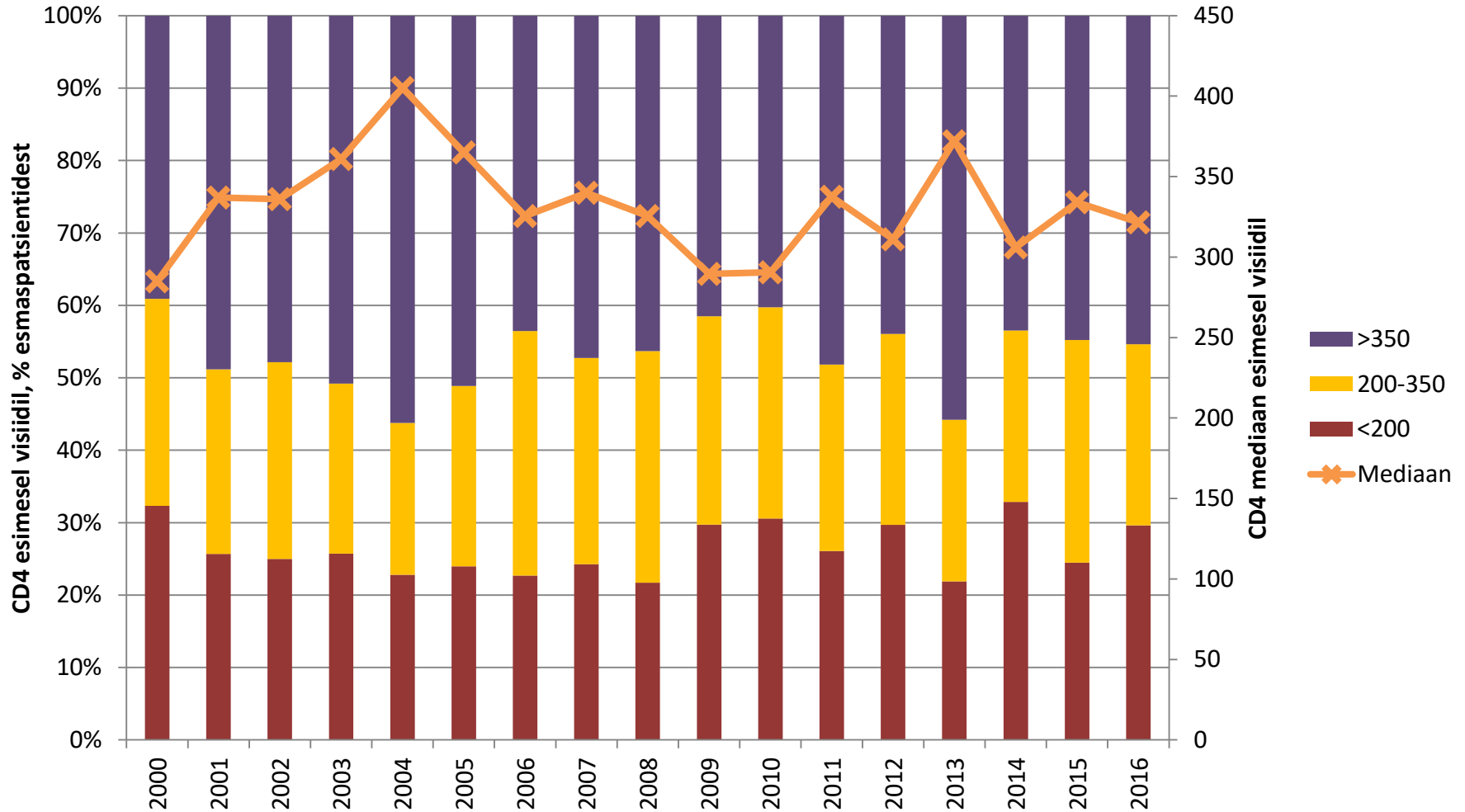


# Mediaanvanused diagnoosimisel



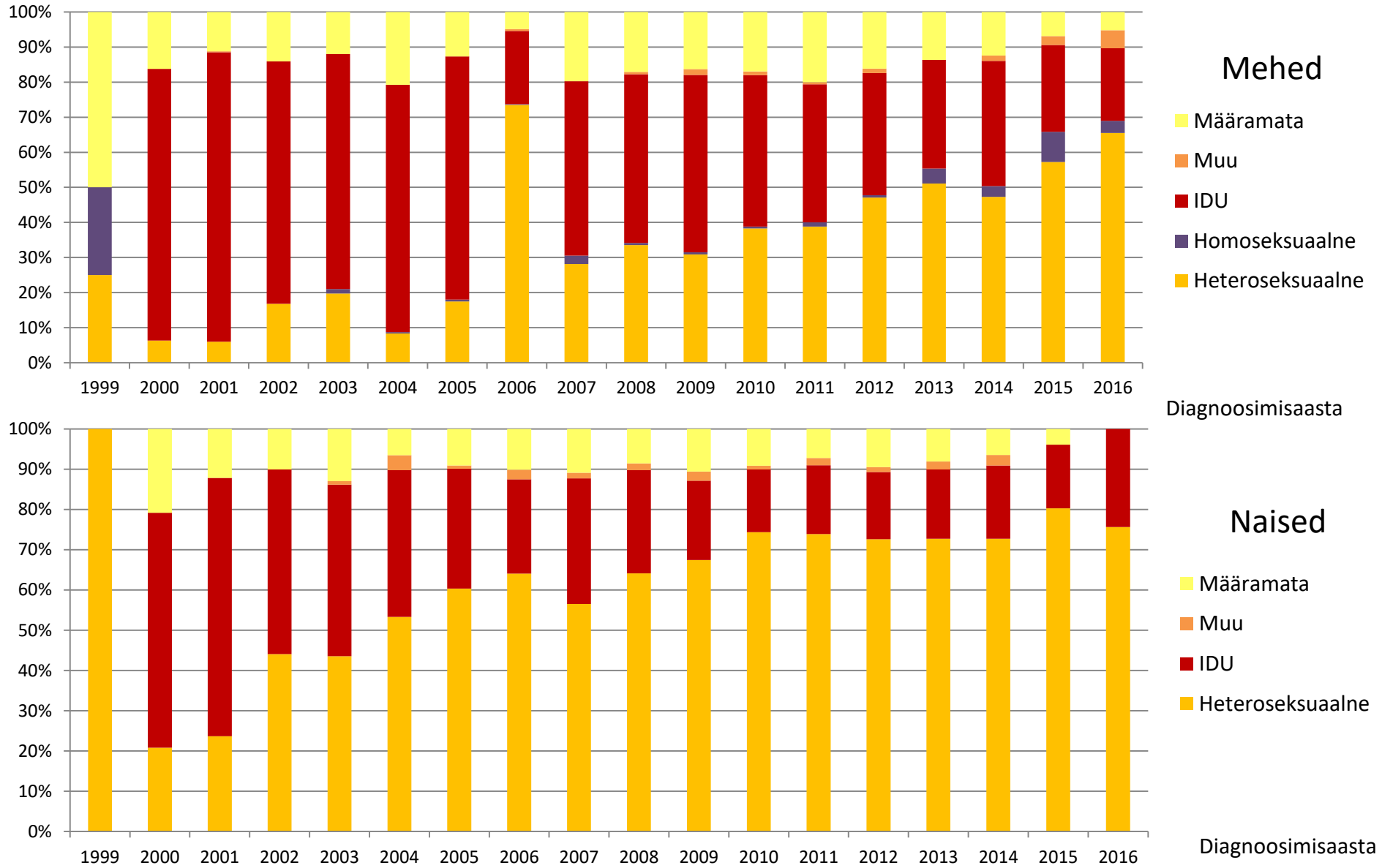


# CD4 väärtused esimesel visiidil





# Nakatumisteed vastavalt soole



# Koostööpartnerid

- Eesti Teadusfond
- Sotsiaalministeerium
- Eesti Teadusagentuur
- Tervise Arengu Instituut
- SA Archimedes



TerVE





# Koostööpartnerid

- Tartu Ülikool, mikrobioloogia instituut
- Tartu Ülikool, tervishoiu instituut
- Quretec OÜ
- GlaxoSmithKline
- EuroCoord
- Professor Sunil K. Ahuja, M.D. Texase Ülikooli  
San Antonio Tervisekeskus